

Prime land assembly opportunity in stunning location just steps to Ladner Village. Inquire at city hall for zoning details. OCP designated ground-oriented residential. Site is suitable for townhomes with possibility for condominium development.

LOT	Size (sq.ft.)	Frontage	Depth
4630 51 Street	8,102	66.01'	122.76'
4624 51 Street	4,430	36.08'	122.76'
4614 51 Street	7,290	59.35'	122.76'
4606 51 Street	8,102	66.01'	122.76'
4600 51 Street	8,102	66.01'	122.76'
4590 51 Street	6,116	49.82'	122.76'
Total For Sale:	27,924 sq.ft.	Total Potential:	42,142 sqft.

Details

Up to over 42,000 sq.ft. on 6 combined lots with 343.28' of frontage and 122.76' of depth.

Suitable for townhomes with possibility for condominium development.

Ideal central Ladner location, across from high school and next to library, swimming pool, parks and shopping.

Only 28kms to Downtown Vancouver.

Only 11kms to BC Ferries Tsawwassen Terminal.

Asking:

\$5,238,000 4 LOTS 4624, 4614, 4606, 4600 51 Street

\$1,388,000 4630 51 St. *Listed by Dexter Associates Realty

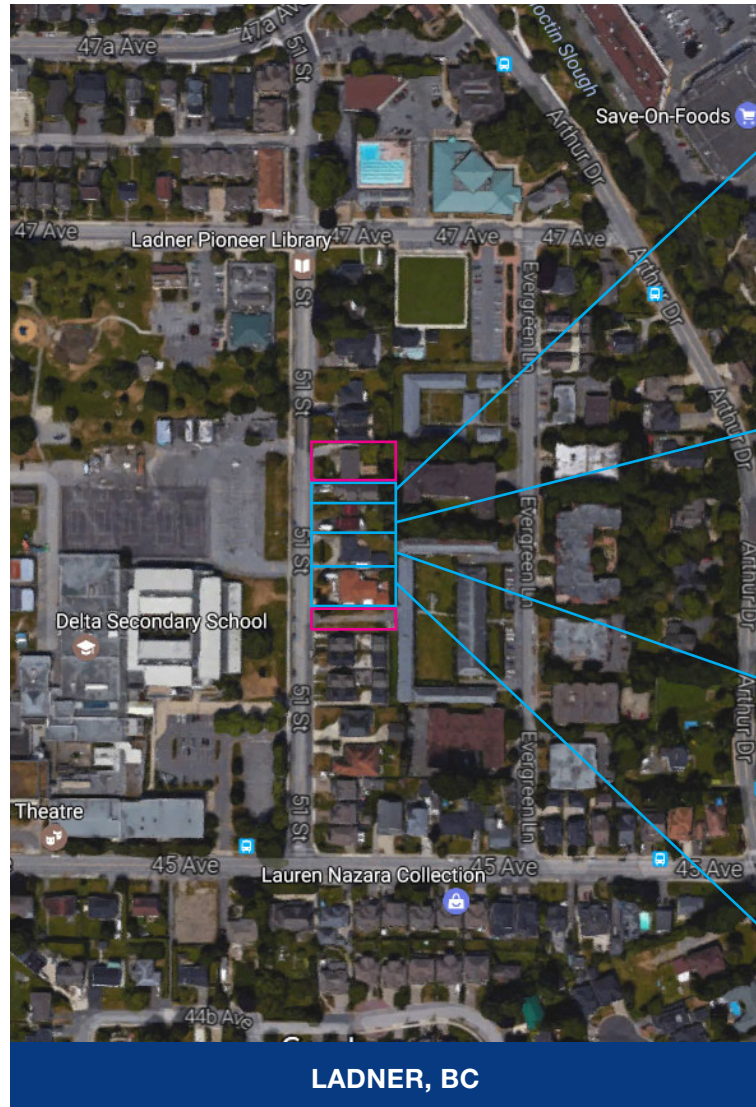
\$ Market Value 4590 51 St. *Vendor has communicated interest to sell

Contact:

Fraser Elliott

604-728-2845

info@fraserelliottgroup.com



LADNER, BC



#1 Ranked TEAM in Greater Vancouver Real Estate Board 2016*

#2 in TEAM in Western Canada RE/MAX Canada 2016**

#5 in TEAM in Canada RE/MAX Canada 2016**

#49 Ranking Team WORLDWIDE for the entire RE/MAX Organization in 2015!***

RE/MAX® Progroup Realty 5360 12th Ave, Delta, BC V4M 2B3

*Based on total REBGV MLS sales January 1 - December 31, 2016 **For total residential and commercial commissions combined of all RE/MAX sales associates in Canada to date - January 1 to August 31, 2016. ***For total residential and commercial commissions combined of all RE/MAX sales associates worldwide. As recognized by the RE/MAX INTERNATIONAL achievement award given to Fraser and/or Fraser and his team for 2015. This communication is not intended to cause or induce breach of an existing agency agreement or relationship.